



PRODUCT SPECIFICATIONS

Item Code: WEL-03-01-C

Category: Electronic Cabinet Lock (Internal or External Powered)

Issue Date: July 2024

Edition V2.4

PRODUCT SPECIFICATIONS

Owner: Willowmore Pte Ltd
Item Code: WEL-03-01-C
Category: Electronic Cabinet Lock (Internal or External Powered)



1.0 Exterior View



2.0 General Specifications

No	Item	Specification/Condition
2.1	Model	WEL-03B Electronic Door Lock (Internal or External Powered)
2.2	Lock / Unlock Mode	Bluetooth BLE V4.2
2.3	Operating voltage	DC 5V \pm 0%
2.4	Steel-bolt torque bear	30 Nm
2.5	Power consumption	\leq 3.6W
2.6	Current Rating	\leq 0.3A
2.7	IP Rating	IP65
2.8	Weight	1.12kg
2.9	Bluetooth Communication distance	< 5m
2.10	Backup Operation	Unique key to operate lock in case of emergency
2.11	External Power	DC 5V via USB-C

PRODUCT SPECIFICATIONS

Owner: Willowmore Pte Ltd
Item Code: WEL-03-01-C
Category: Electronic Cabinet Lock (Internal or External Powered)



3.0 Main Materials / Part Specifications

No	Item	Specification/Condition
3.1	Base Plate	Aluminum alloy
3.2	Handle	Zinc alloy
3.4	Steel Bolt, Press Plate	Steel Q235

4.0 Ambient Condition

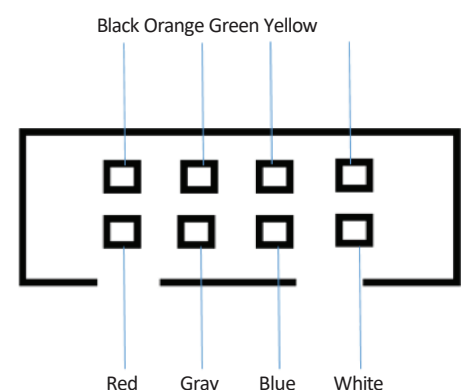
No	Item	Specification/Condition
4.1	Working condition	Temperature: -20 ~ +65°C Humidity: 5 to 90% RH
4.2	Storage condition	Temperature: -40 ~ +80°C Humidity: 0 to 95% RH
4.3	Altitude	Altitude/ Elevation: -60m ~ +4000m

5.0 Internal power cable and alarm connection

Line order:

1. Red: Power Positive 5V
2. Black: Power Supply Ground 0V
3. Gray: Status output latch
4. Orange: Status output latch
5. Blue: Remote Unlock signal is input to a positive voltage signal 5V
6. Green: Reserved (do not wire)
7. White: Magnetic switch input (normally open type)
8. Yellow: Magnetic switch input (normally open type)

NOTE: Do not connect incorrectly, as it will cause irreparable damage to the circuit.



PRODUCT SPECIFICATIONS

Owner: Willowmore Pte Ltd

Item Code: WEL-03-01-C

Category: Electronic Cabinet Lock (Internal or External Powered)



6.0 Operation Instructions

Awaking the bluetooth (BLE) for operation

The standby time after awaking BLE is 30 seconds. If there is no operation after 30 seconds, the lock goes back into hibernation state. You will need to wake the lock again before any operation. If the operation is terminated midway, you will need to re-wake the lock and reconnect the Bluetooth.

The following need to happen before an operation:

1. You will need to awake the bluetooth by pressing the button on the lock.
2. If using remote unlock signal, you will need to awake the bluetooth by pressing the button on the lock, prior to remote lock activation.
3. If lock is left without any operation for more than 30 seconds, you will need to re-awaken the lock again by pressing the button on the lock.

For a successful operation, login to your mobile application, wake the lock by pressing the button on the lock and the lock will show up as the first entity in your lock list. Complete the sequenced operation for locking or unlocking.

7.0 Installation

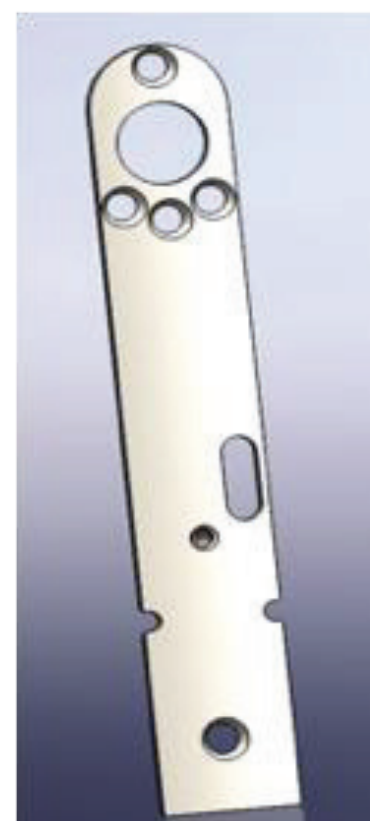
Base plate 1 is suitable for the door cut out with a width of 32 mm and different lengths; Base plate 2 is suitable for the door cut out with a width of 25 mm and different lengths; Base plate 3 is adapted to be irregularly cut out.



Base Plate 1



Base Plate 2



Base Plate 3

PRODUCT SPECIFICATIONS

Owner: Willowmore Pte Ltd

Item Code: WEL-03-01-C

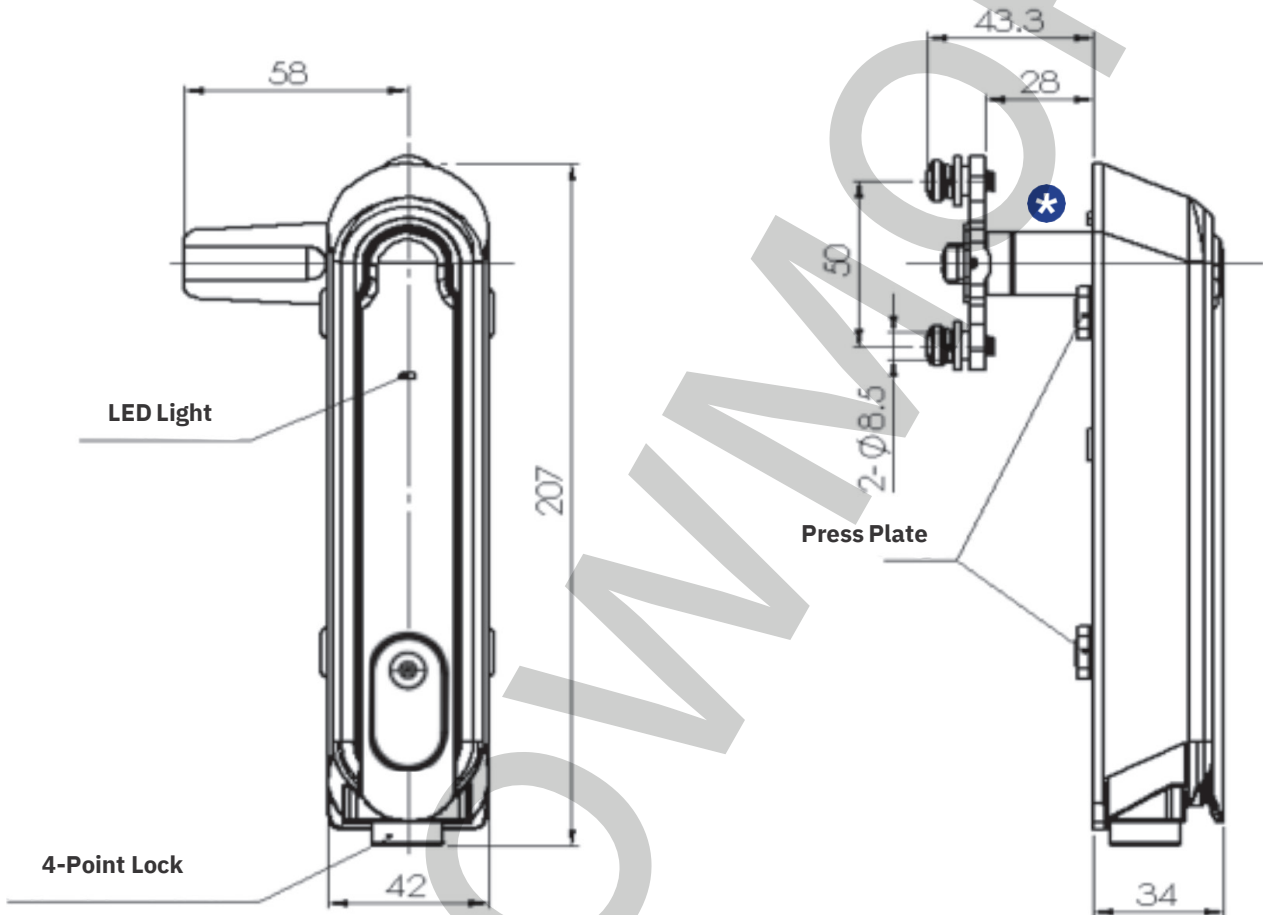
Category: Electronic Cabinet Lock (Internal or External Powered)



WILLOWMORE

1. Dimensions (Two configurations are available)

2. Single point latch configuration:



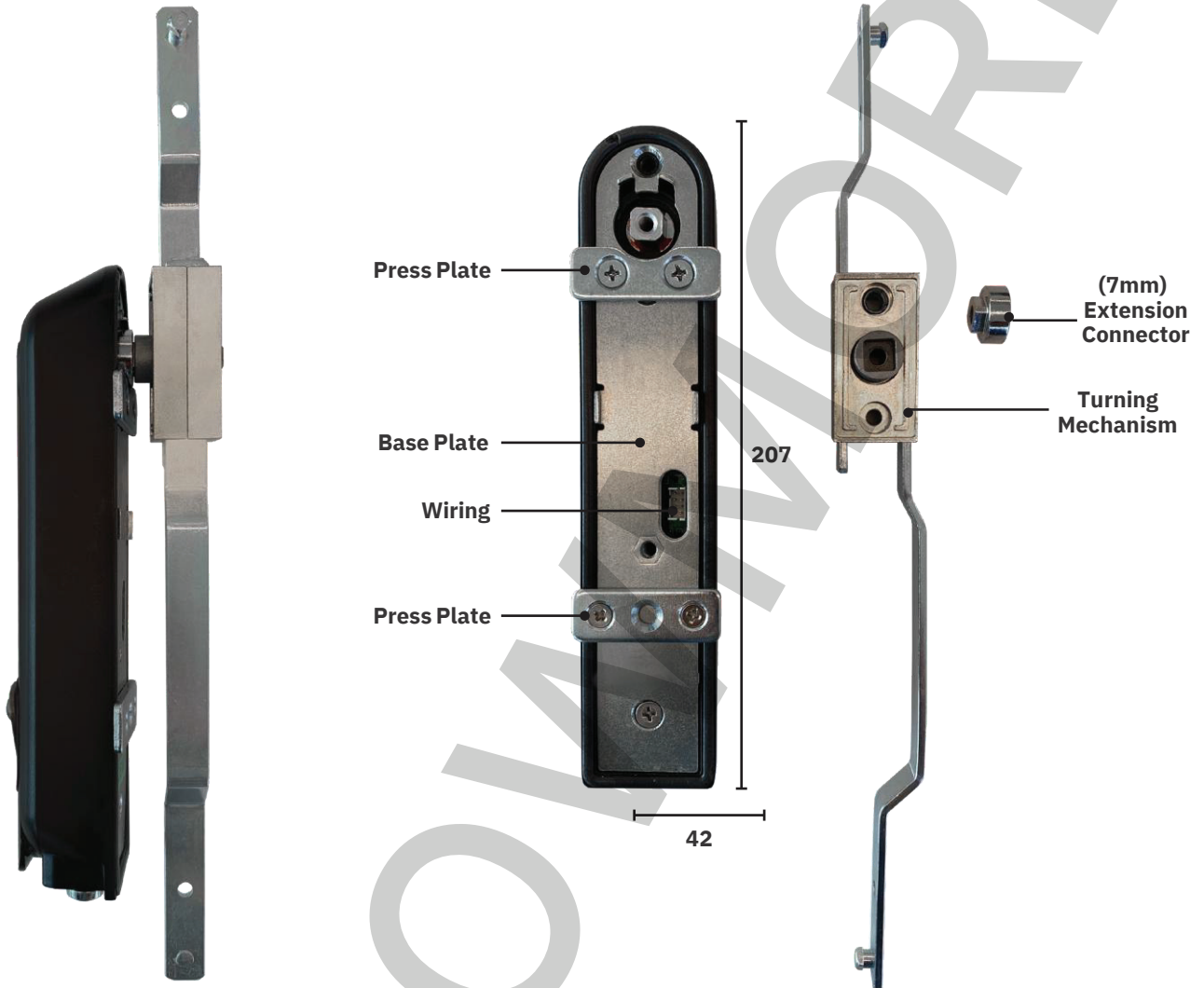
* Note: For cabinets/racks with a wider depth of closure, extension knobs of 23mm can be added to the closing mechanism/

PRODUCT SPECIFICATIONS

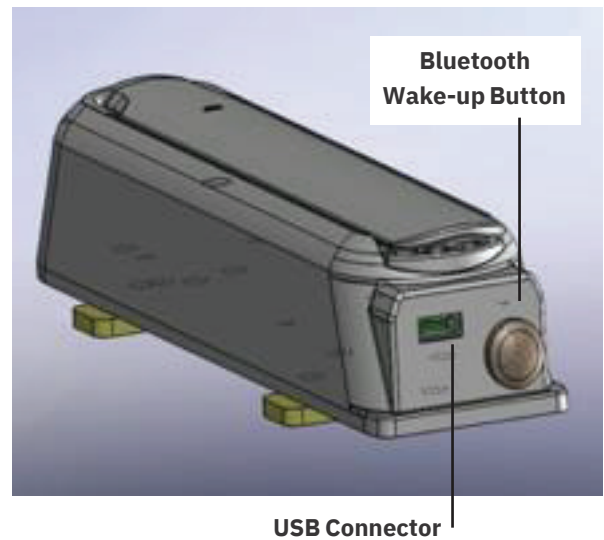
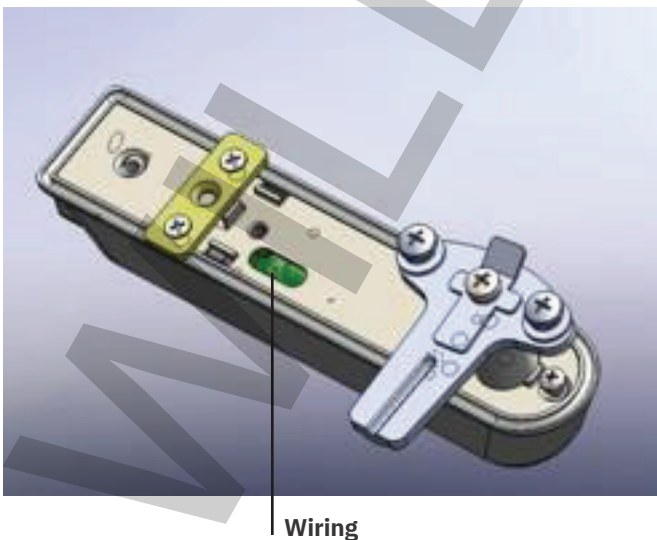
Owner: Willowmore Pte Ltd
Item Code: WEL-03-01-C
Category: Electronic Cabinet Lock (Internal or External Powered)



8.2 Rack drive configuration:



8.0 Wiring Diagram



PRODUCT SPECIFICATIONS

Owner: Willowmore Pte Ltd

Item Code: WEL-03-01-C

Category: **Electronic Cabinet Lock (Internal or External Powered)**



WILLOWMORE

1. Attention

2. Do not exceed the limits specified in this user manual
3. Do not wrap the power cords around the lock or pull the power cord hard, otherwise it will cause damage to the power cords and unable to function.
4. Should any information and documents be different from this version, this information should be used as the main reference;
5. Do not use product in the presence of flammable gases and/or harmful environment;
6. Please exercise caution not to drop the lock during handling or installation as it will render the lock unfunctional.
7. When tightening the screws of the outer casing, the torque should not exceed 3N.m, and the torque of the handle should not exceed 30Nm;
8. During the installation of the door lock on the door, the door lock should not be knocked to avoid damage to the door lock parts.
9. To ensure IP65 water resistance rating, the lock must be installed and ensured that it is horizontally and vertically on a flat surface.
10. Do not use chemicals on the surface of the lock body to prevent corrosion of the plating layer.
11. Electronic lock dust cover should be closed, so as to avoid electronic contacts being vandalised.